

SHOWER 

2023 // MATCH 8 XXL



DANISH DESIGN

ALL OVER WELLNESS

ALL OVER WELLNESS

DANSANI SHOWER

Dansani Match & XXL shower screens will meet your needs for a quality solution, in either large or small bathrooms.



MATCH

Create a shower solution that fits your bathroom perfectly, no matter its size and shape. You can easily find a combination from 6 different types of doors and fixed shower panels.



«

XXL

Large, user-friendly sliding door solution with a functional design. Perfect for recessed showers, but can also be combined with fixed shower panels.



Elegant and timeless look featuring slim, rectangular profiles in satin or black matt finish.



Height of 200 cm provides efficient protection, especially if the shower head is installed on the ceiling.



6 mm clear safety glass. Selected models also available with frosted glass.



Both standard and asymmetric solutions are achievable, to make optimal use of space.



Easy cleaning and maintenance through the EasyCare treatment on the inside.



All models are reversible without having to adjust them or use tools.



Perfect installation on off-square walls and on uneven flooring through various adjustment options.

DANSANI MATCH

06 INSPIRATION

29 PRICE LIST

34 PRODUCT INFORMATION

36 DIMENSIONS

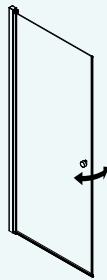
10

10 YEAR WARRANTY

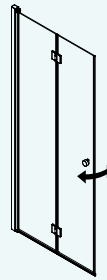
COMBINE FOR AN ENCLOSURE

THE WAY YOU WANT IT

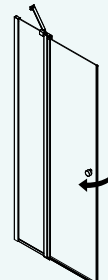
The Match shower series consists of 6 basic models, which can be combined to form the exact shower solution to suit your bathroom. All models are supplied with profiles in black or satin, and they are reversible, so you do not need to differentiate between a right or left-handed model.



A
70 / 80 / 90 / 100 cm
Selected models also
available with frosted glass



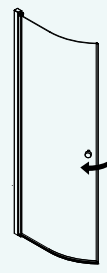
B
70 / 80 / 90 / 100 cm



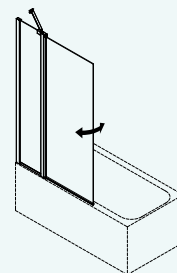
C
90 / 100 cm



D
70 / 80 / 90 / 100 / 120 / 140 cm
Selected models also
available with frosted glass



E
80 / 90 / 100 cm
Selected models also
available with frosted glass



H
100 cm



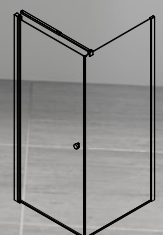
HINGED DOOR AND FIXED SHOWER PANEL

Classic combination of a fixed shower panel with a hinged door. This is practical, because you can place furniture closer to the fixed shower panel, and use the space for a wider basin or an extra cabinet.



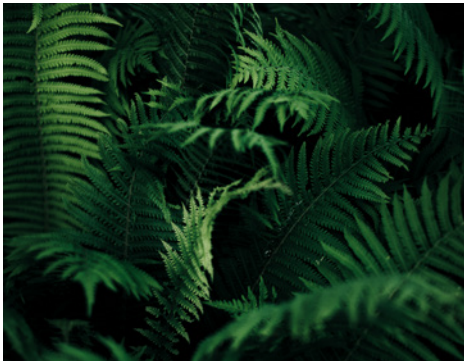
80 cm A+D+4 - Clear glass, black matt

Hinged door 449.- Art. no. A81-03 / Fixed shower panel 449.- Art. no. D81-03 /
Telescopic support rail 72.- Art. no. 1603503



A + D + 4

SIMPLE &
FLEXIBLE



80 cm A+A - Frosted glass, satin
Hinged door 542.- Art. no. A81-02 /
Hinged door 542.- Art. no. A81-02



TWO HINGED DOORS

When the enclosure is not in use the doors simply fold back on themselves into the corner freeing up valuable space in small rooms.



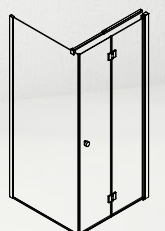
80 cm A+A - Clear glass, black matt
Hinged door 449.- Art. no. A81-03 / Hinged door 449.- Art. no. A81-03



A + A

FIXED SHOWER PANEL AND BIFOLD DOOR

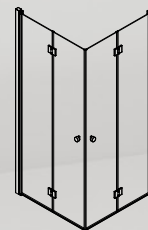
Very practical in a small bathroom, as the door opens inwards into the wet area. No water drips onto the floor outside – the perfect way to start or end the day.



B + D + 4

80 cm B+D+4 - Clear glass, satin

Bifold door 542.- Art. no. B81-01 / Fixed shower panel 449.- Art. no. D81-01 /
Telescopic support rail 72.- Art. no. 1600503



B + B



90 cm B+B - Clear glass, black matt

Bifold door 542.- Art. no. B91-03 / Bifold door 542.- Art. no. B91-03



On the inside of the bifold door the hinge is concealed and flush with the glass panel. Beautiful, practical design in action.



Simple and ergonomic knob style handle comes as standard with all door versions.



TWO BIFOLD DOORS

A smart solution where both doors can be folded in when you are not using the shower enclosure, so they take up as little space as possible in the room. The bifold door can also be combined with other doors as well as fixed shower panels.

A FIXED

SHOWER PANEL

Simple, classic fixed shower panel, which can be installed with either a wall support, a fixed rail or a telescopic support rail.





D + 2/3

80 cm D+2/3 - Clear glass, black matt

Fixed shower panel 449.- Art. no. D81-03 / Wall support 72.- Art. no. 1603508

FURNITURE NEXT TO YOUR CORNER SHOWER

Make use of the space right next to your corner shower by choosing a hinged door with an in-line panel. The short fixed side panel allows furniture close to the corner shower. When you are not using the shower, the doors can be pushed in without obstruction of the shower fittings, to give you more space.

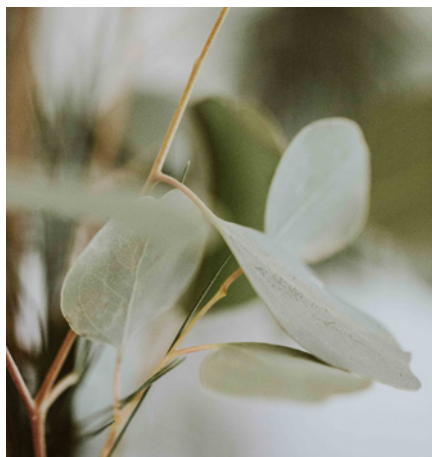




Fixed shower panels are supplied with a floor profile which keeps the water inside, and a floor bracket that gives a light, floating effect. You choose for yourself which you want to use.



A hinged door with fixed panel is supplied with a wall support as standard.

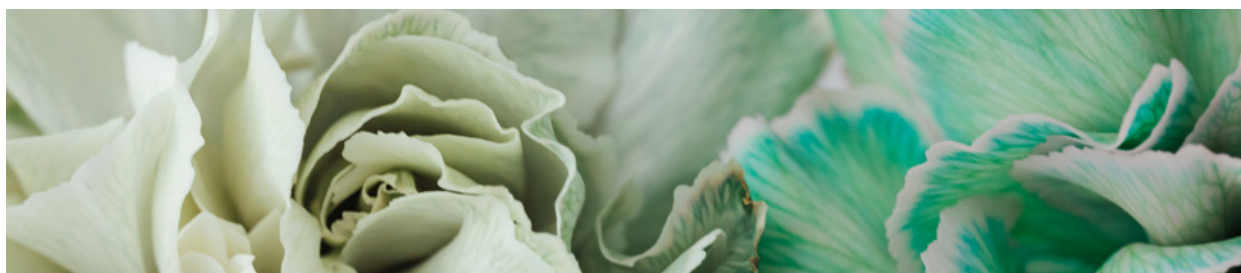


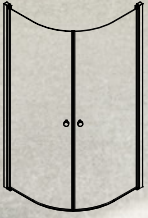
The simple profiles conceal a rise and fall hinge, as well as an adjustment to ensure the doors operate perfectly every time. A cover cap finishes the overall look.



TWO QUADRANT HINGED DOORS

Simple and stylish enclosure with two curved shower doors. The doors open both in and out freeing up valuable space when not in use.





E + E



90 cm E+E - Clear glass, satin

Quadrant hinged door 449 - Art. no. E91-01 / Quadrant hinged door 449 - Art. no. E91-01

A SMART

RECESS SHOWER

Choose between a hinged door, a bifold door or a door with a fixed side panel for your recessed shower.



HINGED DOOR WITH IN-LINE PANELS

A smart recessed shower lets you place furniture closer to the shower while making optimal use of the space.



BIFOLD DOOR

A practical solution in a small bathroom, as the door opens inwards, and keeps the water in the shower area.

HINGED DOOR

For even the smallest of rooms using the Match hinged door provides an effective showering solution - even in the guest room. Simply fold the door against the wall when not in use, and open up when required.



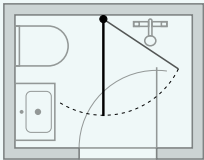
A

80 cm A - Clear glass, satin
Hinged door, 449.- Art. no. A81-01

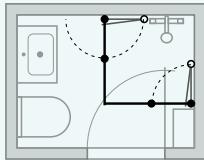
FURNISHING TIPS FOR SMALL BATHROOMS

Here you can find inspiration to make optimal use of space, if you have a very small or narrow bathroom.
Many Match models allow you to place furniture closer to your shower solution, so there is room for a wider basin or an extra cabinet. The code under each solution refers to the door model and its width

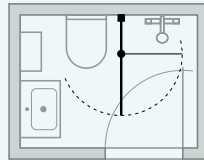
120 x 160 CM



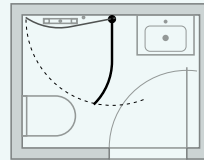
A91



B81+B81

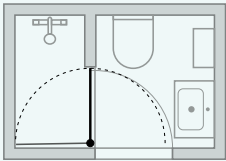


C91

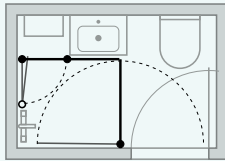


E81

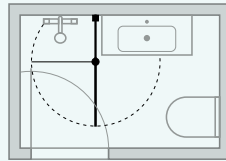
120 x 180 CM



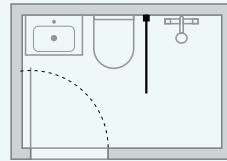
A71



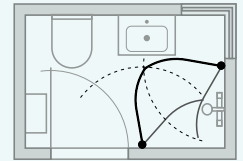
B91 + A81



C101

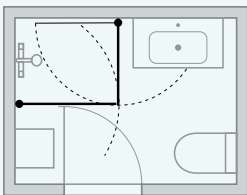


D71

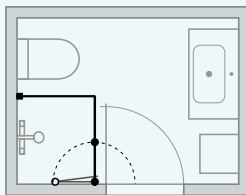


E91

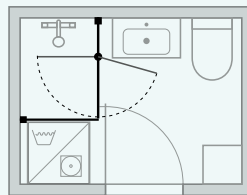
150 x 200 CM



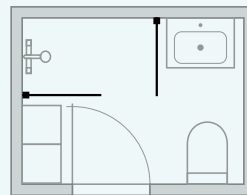
A81 + A91



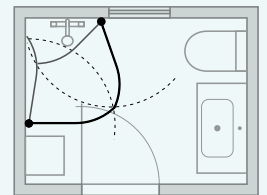
B81 + D71



C91 + D71

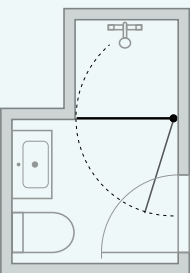


D71 + D71

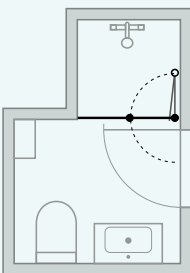


E81 + E81

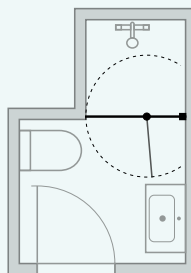
RECESS 90 CM 220 x 150 CM



A91



B91



C91



EVERYONE HATES BATTLING

WITH SCALE AND GRIME

All glass in the Dansani shower series is given a hard-wearing and environment-friendly EasyCare treatment, which prevents scale and grime buildup – even after being wiped 30,000 times. Simply wipe the glass over with a soft cloth after use, and your glass will look great for many years to come.

EasyCare is an environment-friendly German product, and certified by the independent SGS Institut Fresenius laboratory in accordance with OECD Guideline 2009.

PLENTY OF SPACE WITH A WALK-IN SHOWER

For plenty of space and room to move around, this walk in wetroom enclosure is perfect providing an elegant solution with a very open minimalist look. With two telescopic support rails and a connector kit the solution is stable as well as attractive.



NO MORE MESS IN THE SHOWER AREA

Everyone hates an untidy bathroom, especially in the shower area. With the Tower corner shelf, which is an integrated part of the Match series, there is storage space for shampoo, soap and whatever else you need in the shower. Tower is available in black or satin.

NEW



100 cm A+D+2/3 - Clear glass, black matt

Hinged door 449.- Art. no. A101-03 /
Fixed shower panel 449.- Art. no. D101-03 /
Wall support 72.- Art. no. 1603508 /
Tower 244.- Art. no. 1603570



A + D + 2/3 + Tower



GOODBYE TO SHOWER CURTAINS

This elegant screen means no more shower curtains, and it creates a far more spacious feeling in the room.
The glass door can fold in towards the shower fittings, so the screen takes up the least possible space.
Supplied with wall support.



ADD THE

FINAL TOUCHES

An exclusive range of accessories will make daily life with Dansani Match an even greater pleasure. Everything is thought out down to the tiniest detail and designed for optimal use.



NEW

TOWER SHELF

Simple & elegant shower caddy with 5 movable shelves. Easily combined with Match doors, to keep track of soap, shampoo and everything you need in the shower. Simply choose a 10 cm shorter door to allow space for Tower. The shelf is reversible.

Dimensions: 200 x 10 x 10 cm

Satin

Art. no. 1600570

244.-

Black matt

Art. no. 1603570

244.-



SQUEEGEE IN SILICONE

Contemporary shower squeegee in a dark grey silicone. The slightly textured surface enables a firm grip. The squeegee comes with a practical hook that hangs on the edge of the glass.

Dark grey silicone

Art. no.: 1600162

33.-



MINIMALIST SQUEEGEE

Elegant chrome squeegee. The strict and simple design is adapted to Match. The squeegee can hang directly on the edge of the glass using the included silicone hook.

Chrome

Art. no.: 1600012

33.-

Replacement rubber

Art. no.: 1600017

10.-



ERGONOMIC SQUEEGEE

No more water drops that turn into unsightly limescale deposits. Smart shower squeegee which fits well into the hand and hangs elegantly in the accompanying bracket.

Stainless steel

Art. no.: 2400346

33.-

Replacement rubber

Art. no.: 2400500

10.-



SHOWER CORNER

Smart stainless steel shelf. The shelf is built into the corner of the shower cubicle without the use of screws, but can also be retro fitted in an existing shower enclosure.

Chrome

Art. no.: 2400600

68.-



TOWEL HOOK IN SILICONE

Set with two hooks. The hook can hang on the edge of the glass, on the inside or outside, and is practical for towels, brushes, sponges etc.

Available in light or dark grey.

Light grey

Art. no.: 1600013

12.-

Dark grey

Art. no.: 1600163

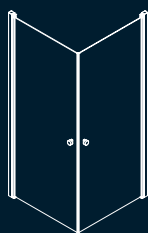
12.-



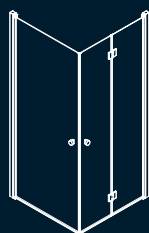
MIX & MATCH YOUR OWN

SHOWER ENCLOSURE

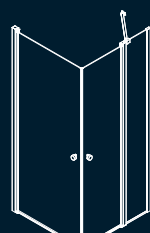
You can mix & match all of the basic models – see an overview here.



A + A



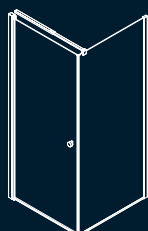
A + B



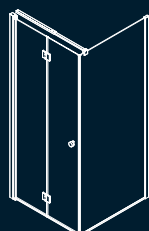
A + C



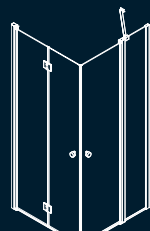
A + 1



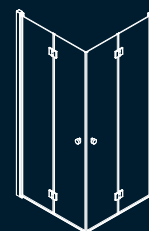
A + D + 4



B + D + 4



B + C



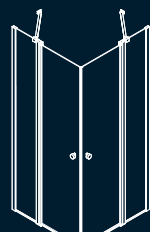
B + B



B + 1



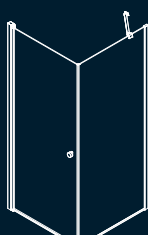
C + 1



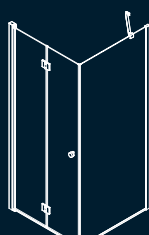
C + C



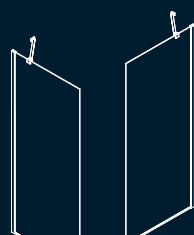
D + 2/3



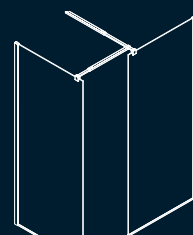
A + D + 2/3



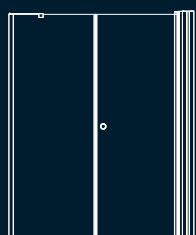
B + D + 2/3



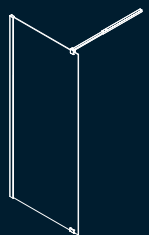
D + D + 2/3 (2 PCS.)



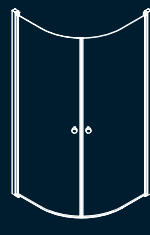
D + D + 4 (2 PCS.) + 5



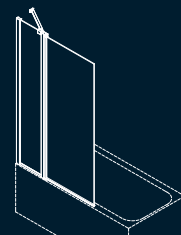
A + D + 2/3 + TOWER



D + 4



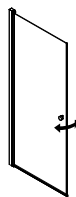
E + E



H

MATCH BASE MODELS

A - HINGED DOOR



Material/Profile colour

Clear glass/Satin
Clear glass/Black matt
Frosted glass/Satin
Height 200 cm



CORNER SOLUTION

Set, min/max adjustment



RECESS SOLUTION - SEE ACCESSORIES

Door, min/max adjustment
Door with wall profile 8, min/max adjustment
Door with wall profile 1, min/max adjustment
Door with sealing strip 9, min/max adjustment

On request satin profile models are available in sizes that are 2 cm smaller

70 CM		80 CM		90 CM		100 CM	
Art. no.	Price £	Art. no.	Price £	Art. no.	Price £	Art. no.	Price £
A71-01	449.-	A81-01	449.-	A91-01	449.-	A101-01	449.-
A71-03	449.-	A81-03	449.-	A91-03	449.-	A101-03	449.-
A71-02	542.-	A81-02	542.-	A91-02	542.-	-	-
69-71 cm, see page 36		79-81 cm, see page 36		89-91 cm, see page 36		99-101 cm, see page 36	
67-69 cm		77-79 cm		87-89 cm		97-99 cm	
69,5-71,5 cm		79,5-81,5 cm		89,5-91,5 cm		99,5-101,5 cm	
71,5-75,5 cm		81,5-85,5 cm		91,5-95,5 cm		101,5-105,5 cm	
67,5 - 69,5 cm		77,5 - 79,5 cm		87,5 - 89,5 cm		97,5 - 99,5 cm	

B - BIFOLD DOOR (180°)



Material/Profile colour

Clear glass/Satin
Clear glass/Black matt
Height 200 cm



CORNER SOLUTION

Set, min/max adjustment



RECESS SOLUTION - SEE ACCESSORIES

Door, min/max adjustment
Door with wall profile 8, min/max adjustment
Door with wall profile 1, min/max adjustment
Door with sealing strip 9, min/max adjustment

On request satin profile models are available in sizes that are 2 cm smaller

70 CM		80 CM		90 CM		100 CM	
Art. no.	Price £	Art. no.	Price £	Art. no.	Price £	Art. no.	Price £
B71-01	542.-	B81-01	542.-	B91-01	542.-	B101-01	542.-
B71-03	542.-	B81-03	542.-	B91-03	542.-	B101-03	542.-
69-71 cm, see page 36		79-81 cm, see page 36		89-91 cm, see page 36		99-101 cm, see page 36	
67-69 cm		77-79 cm		87-89 cm		97-99 cm	
69,5-71,5 cm		79,5-81,5 cm		89,5-91,5 cm		99,5-101,5 cm	
71,5-75,5 cm		81,5-85,5 cm		91,5-95,5 cm		101,5-105,5 cm	
67,5 - 69,5 cm		77,5 - 79,5 cm		87,5 - 89,5 cm		97,5 - 99,5 cm	

C - HINGED DOOR (180°) WITH IN-LINE PANEL AND WALL SUPPORT



Material/Profile colour

Clear glass/Satin
Height 200 cm



CORNER SOLUTION

Set, min/max adjustment



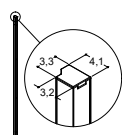
RECESS SOLUTION - SEE ACCESSORIES

Door, min/max adjustment
Door with wall profile 8, min/max adjustment
Door with wall profile 1, min/max adjustment
Door with sealing strip 9, min/max adjustment

On request satin profile models are available in sizes that are 2 cm smaller

70 CM		80 CM		90 CM		100 CM	
Art. no.	Price £	Art. no.	Price £	Art. no.	Price £	Art. no.	Price £
-	-	-	-	C91-01	449.-	C101-01	449.-
				89-91 cm, see page 36		99-101 cm, see page 36	
				87-89 cm		97-99 cm	
				89,5-91,5 cm		99,5-101,5 cm	
				91,5-95,5 cm		101,5-105,5 cm	
				87,5 - 89,5 cm		97,5 - 99,5 cm	

WALL PROFILE FOR RECESS 1

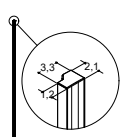


Colour

Satin
Black matt
Incl magnetic seal, adjustable

70 CM		80 CM		90 CM		100 CM	
Art. no.	Price £	Art. no.	Price £	Art. no.	Price £	Art. no.	Price £
1600501	184.-	1600501	184.-	1600501	184.-	1600501	184.-
1603501	184.-	1603501	184.-	1603501	184.-	1603501	184.-

WALL PROFILE FOR RECESS 8

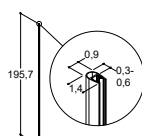


Colour

Satin
Black matt
Incl magnetic seal, slim profile without adjustment

70 CM		80 CM		90 CM		100 CM	
Art. no.	Price £	Art. no.	Price £	Art. no.	Price £	Art. no.	Price £
1600535	93.-	1600535	93.-	1600535	93.-	1600535	93.-
1603535	93.-	1603535	93.-	1603535	93.-	1603535	93.-

SEALING STRIP 9



Colour

Transparent
Black matt
D-profile PVC Sealing strip. Without adjustment

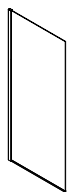
70 CM		80 CM		90 CM		100 CM	
Art. no.	Price £	Art. no.	Price £	Art. no.	Price £	Art. no.	Price £
1600639	24.-	1600639	24.-	1600639	24.-	1600639	24.-
1603639	24.-	1603639	24.-	1603639	24.-	1603639	24.-

General size guide – for exact sizes in mm for the different combinations see page 36-37

MATCH BASE MODELS

FIXED SHOWER PANEL WITH FLOOR PROFILE AND BRACKET

NB: Always add support



Material/Profile colour
Clear glass/Satin
Clear glass/Black matt
Frosted glass/Satin
Height 197,5 cm



Panel, min/max adjustment

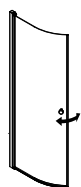
On request satin profile models are available in sizes that are 2 cm smaller

70 CM		80 CM		90 CM	
Art. no.	Price £	Art. no.	Price £	Art. no.	Price £
D71-01	449.-	D81-01	449.-	D91-01	449.-
D71-03	449.-	D81-03	449.-	D91-03	449.-
D71-02	542.-	D81-02	542.-	D91-02	542.-
67-69 cm		77-79 cm		87-89 cm	

SUPPORT FOR FIXED SHOWER PANEL

Colour	Art. no.	Price £	Art. no.	Price £	Art. no.	Price £
2 Wall support 300 mm (fixed shower panel)						
Satin	1600502	72.-	-	-	-	-
Black matt	1603502	72.-	-	-	-	-
3 Wall support 600 mm (fixed shower panel)						
Satin	-	-	1600508	72.-	1600508	72.-
Black matt	-	-	1603508	72.-	1603508	72.-
4 Telescopic support rail 60-100 cm (fixed shower panel)						
Satin	1600503	72.-	1600503	72.-	1600503	72.-
Black matt	1603503	72.-	1603503	72.-	1603503	72.-
5 Connector kit til model D+D+4 (2 pcs.)						
Satin	1600504	20.-	1600504	20.-	1600504	20.-
Black matt	1603504	20.-	1603504	20.-	1603504	20.-
6 Support rail 120 cm for model D (fixed shower panel). Can be cut to suit if necessary						
Satin	1600527	72.-	1600527	72.-	1600527	72.-
Black matt	1603527	72.-	1603527	72.-	1603527	72.-
7 Vertical ceiling support rail 100 cm for model D (fixed shower panel). Can be cut to suit if necessary						
Satin	1600528	72.-	1600528	72.-	1600528	72.-
Black matt	1603528	72.-	1603528	72.-	1603528	72.-

E - QUADRANT HINGED DOOR (180°)



Material/Profile colour
Clear glass/Satin
Clear glass/Black matt
Frosted glass/Satin
Height 200 cm



CORNER SOLUTION

Set, min/max adjustment



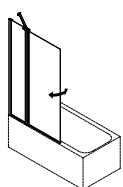
AFSKÆRMNING

Door, min/max adjustment

On request satin profile models are available in sizes that are 2 cm smaller

Art. no.	Price £	Art. no.	Price £	Art. no.	Price £
-	-	E81-01	449.-	E91-01	449.-
-	-	E81-03	449.-	E91-03	449.-
-	-	-	-	E91-02	542.-
		79-81 cm, see page 36		89-91 cm, see page 36	
		62-64 cm		72-74 cm	

H - BATH PANEL WITH HINGED DOOR



Material/Profile colour
Clear glass/Satin
Height 155 cm
Min/max adjustment

Art. no.	Price £	Art. no.	Price £	Art. no.	Price £
-	-	-	-	-	-

General size guide – for exact sizes in mm for the different combinations see page 36-37

100 CM

Art. no.	Price £
D101-01	449.-
D101-03	449.-
D101-02	542.-

97-99 cm

Art. no.	Price £
-	-
-	-

1600508	72.-
1603508	72.-

1600503	72.-
1603503	72.-

1600504	20.-
1603504	20.-

1600527	72.-
1603527	72.-

1600528	72.-
1603528	72.-

Art. no.	Price £
E101-01	449.-
-	-
-	-

99-101 cm, see page 36

82-84 cm

Art. no.	Price £
H100-01	449.-

95-97 cm, see page 36

120 CM

Art. no.	Price £
D121-01	631.-
-	-
-	-

117-119 cm

Art. no.	Price £
-	-
-	-

1600508	72.-
1603508	72.-

1600503	72.-
1603503	72.-

1600504	20.-
1603504	20.-

1600527	72.-
1603527	72.-

1600528	72.-
1603528	72.-

Art. no.	Price £
-	-
-	-
-	-

140 CM

Art. no.	Price £
D141-01	631.-
-	-
-	-

137-139 cm

Art. no.	Price £
-	-
-	-

1600508	72.-
1603508	72.-

1600503	72.-
1603503	72.-

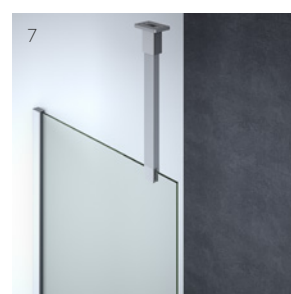
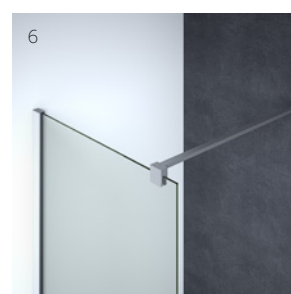
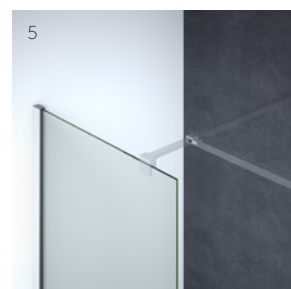
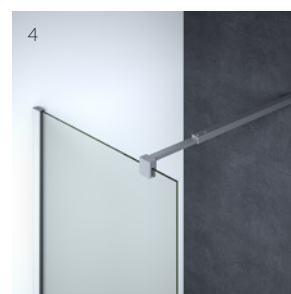
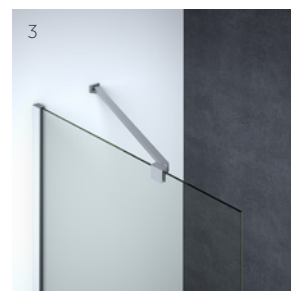
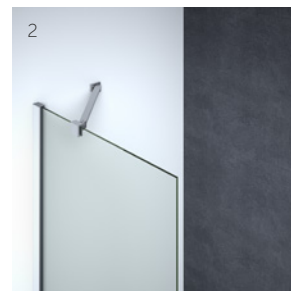
1600504	20.-
1603504	20.-

1600527	72.-
1603527	72.-

1600528	72.-
1603528	72.-

Art. no.	Price £
-	-
-	-
-	-

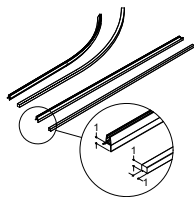
**SUPPORT FOR
FIXED SHOWER PANEL**



ACCESSORIES

FLOOR PROFILE SET

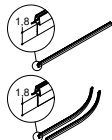
Provides a power shower proof solution (CE-certified)



Description	Doors	Colour	Art. no.	Price £
For square enclosures A, B, C	2 doors	Chrome	1600550	72.-
For square enclosures A, B, C	2 doors	Black matt	1603550	72.-
For recess applications 1+A/B/C	1 door	Chrome	1600551	72.-
For recess applications 1+A/B/C	1 door	Black matt	1603551	72.-
For fixed shower panels D+A/B/C	1 door	Chrome	1600552	72.-
For fixed shower panels D+A/B/C	1 door	Black matt	1603552	72.-
For quadrant enclosure E	2 doors	Chrome	1600553	72.-
For quadrant enclosure E	2 doors	Black matt	1603553	72.-

Cut to suit the relevant enclosure on site. Can also be retro fitted.

PVC SEAL, STANDARD (18MM)

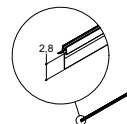


Description	Colour	Art. no.	Price £
For straight doors (1 pcs.)	Transparent	1600565	24.-
For straight doors (1 pcs.)	Black matt	1603565	24.-
For curved doors model E (2 pcs.)	Transparent	1600566	48.-
For curved doors model E (2 pcs.)	Black matt	1603566	48.-

Cut to suit the relevant enclosure on site

PVC SEAL, TALL (28 MM)

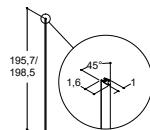
For use on floors with large fall towards the drain



Description	Colour	Art. no.	Price £
For straight doors (2 pcs. set)	Transparent	1600560	48.-
For straight doors (2 pcs. set)	Black matt	1603560	48.-
For quadrant doors (2 pcs. set)	Transparent	1600561	48.-
For quadrant doors (2 pcs. set)	Black matt	1603561	48.-
For recess doors (1 pcs.)	Transparent	1600562	24.-
For recess doors (1 pcs.)	Black matt	1603562	24.-

Cut to suit the relevant enclosure on site

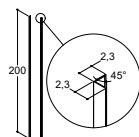
MAGNETIC SEAL



Description	Colour	Art. no.	Price £
For A/B/C/E (1 pcs.)	Transparent	1600606	24.-
For A/B/C/E (1 pcs.)	Black matt	1603606	24.-
For D fixed shower panel (1 pcs.)	Transparent	1600622	24.-
For D fixed shower panel (1 pcs.)	Black matt	1603622	24.-

PROFILE 45 DEGREE FOR RECESS SOLUTION

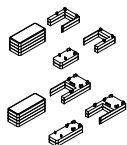
For use with neo angle installations



Description	Colour	Art. no.	Price £
Profile (2 pcs.)	Satin	1600506	117.-
Profile (2 pcs.)	Black matt	1603506	117.-

Increases the size by 33 mm on both sides.

SPACER KITS

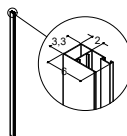


Description	Colour	Art. no.	Price £
2 x 6 mm door-door and door-fixed shower panel	Chrome	1600628	48.-
2 x 6 mm door-door and door-fixed shower panel	Black matt	1603628	48.-
2 x 6 mm door-door and door-fixed shower panel kit for shower extension profile	Chrome	1600629	48.-
2 x 6 mm door-door and door-fixed shower panel kit for shower extension profile	Black matt	1603629	48.-

Spacer kits for adjustment of uneven floors

SHOWER EXTENSION PROFILE FOR A, B, E AND WALL PROFILE 1

Exposed pipework can also pass through

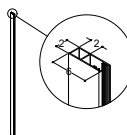


Description	Colour	Art. no.	Price £
200 cm for A, B and E	Satin	1600507	117.-
200 cm for A, B and E	Black matt	1603507	117.-
197,5 cm for 1	Satin	1600534	117.-
197,5 cm for 1	Black matt	1603534	117.-

Can be combined with all types of doors and fixed shower panel and increases the overall size by 20 mm. It is possible to drill a 20-40mm hole for pipework.

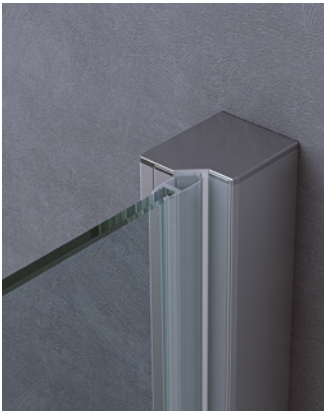
SHOWER EXTENSION PROFILE FOR C AND D

Exposed pipework can also pass through



Description	Colour	Art. no.	Price £
199,5 cm for C	Satin	1600525	117.-
197,5 cm for D	Satin	1600526	117.-
197,5 cm for D	Black matt	1603526	117.-

Can be combined with all types of doors and fixed shower panel and increases the overall size by 20 mm. It is possible to drill a 20-40mm hole for pipework.



MODEL 1 – WALL PROFILE FOR RECESS FOR DOOR A, B AND C

Wall profile for recess 1 can be combined with door A, B and C. In this way there is adjustability on both sides with an overall adjustment possible of 40 mm.

MODEL 8 – WALL PROFILE FOR RECESS FOR DOOR A, B AND C

Wall profile for recess 8 can be combined with door A, B and C. To be used where less adjustment is required for a neater look. Please note that using this profile means there is adjustment of only 20mm on the hinged door.

MODEL 9 – SEALING STRIP FOR DOOR A, B AND C

Sealing strip 9 can be combined with door A, B or C. Can be used where a narrower installation is required without a wall profile for a recess. For use where a wall profile is not required for a recess on the wall opposite the hinge, to give a light, elegant installation. Note that with the narrower installation, there is only 20 mm for adjusting the door on the hinge side.



MATCH ADJUSTABLE PIVOT HINGE - PROBLEM SOLVER

It is also possible to set up shower solutions, even when the shower doors don't line up or the walls are off square. The pivot hinge can be adjusted so the doors then close to this position. See fitting instructions.

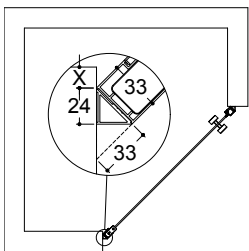
See examples on p. 20 Model E81+E81.



FLOOR PROFILE

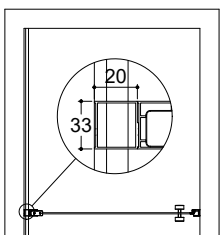
Additional floor profile can be purchased and is placed on the outside of the enclosure door for optimum water proofing and enables CE approval in accordance with EN 14428:2015. This profile can easily be retro fitted as well.

X = MAX 25 mm



PROFILE 45 DEGREE

This 45 degree profile is used in neo angled recessed applications. Please note this will increase the overall width by 33 mm on each side.



ADDITIONAL WALL PROFILE FOR EXPOSED WATER SUPPLY

This profile is used in connection with an exposed water supply running on the outside of the wall. Can be combined with all variants of shower doors and fixed shower panels. The additional wall profile will increase further adjustment of between 20-40 mm depending on how straight the walls are.

PRODUCT INFORMATION

MATCH HINGED AND FIXED SHOWER PANELS

All Match hinged doors and fixed shower panels have been tested to comply with EN 14428:2015 referring to toughening of glass, stability and water tightness classification.

GLASS

6 mm hardened safety glass complying with EN12150 with EasyCare treatment on the inside. Clear glass and some models in frosted glass.

PROFILES

Strong aluminium alloy with hard-wearing satin-anodised or black matt powder-coated surface.

HINGES

Rise and fall hinges that open both inwards and outwards by 180 degrees. The door is held open at 90 degrees either way. Inside the hinge a waterproof seal has been added.

MAGNETIC PROFILES

One removable magnetic profile is supplied with every door and fixed shower panel, that can be combined with profiles across the range. Once the magnet has been activated twice the polarity is set so the two magnetic seals work together. The magnet is located inside a PVC profile, with a matt surface to ensure they do not stick together during prolonged times of little or no use. The angled magnetic catch ensures perfect closure every time. The profile can be fitted in both left and right-hand applications, without the need for tools.

FIXED SHOWER PANEL

The glass panel can be adjusted by 20 mm at the wall profile, and is fixed in place with PVC profiles inside the alu profile. The floor profile can be adjusted up to 6 mm horizontally and using the spacers provided to suit, 12 mm vertically. Alternatively, a 12 mm adjustable floor bracket can be used for wet room solutions where no seals are required.

DOORS

On models A, B and E the hinge can be adjusted by 20 mm at the wall profile for off-square applications. On fixed shower panel models C and D the glass panel is adjusted within the wall profile as it is for fixed shower panels. The floor profile can be adjusted up to 6 mm horizontally using the predrilled slot.

HANDLES

A chrome-plated ABS knob handle is included with all doors.

FITTINGS

Floor brackets and fittings for telescopic support rail and wall support in chrome-plated zinc-aluminium or black matt powder coated. End caps for profiles and various fittings in chrome-plated or black matt ABS.

TELESCOPIC SUPPORT RAIL

Strong alloy rail with hardwearing, satin-anodised chrome-plated or black matt powder-coated surface with concealed wall fixing bracket. The support rail also has a concealed fixing to the profile and is adjustable from 60 to 100 cm.

WALL SUPPORT

Strong alloy wall support with hardwearing, satin-anodised chromeplated or black matt powder-coated surface with fittings in chromeplated zinc aluminium.

SEAL

Transparent or black matt PVC seal used with doors at floor level can easily be replaced if required over time. Taller seals can also be purchased separately if required for certain applications.

LEAD-TIME

All Match models are in stock for fast supply with 1 door/panel in 1 box. All boxes can be handled by one person as they are below 30 kg. Accessories like support rails and alternative handles are packed separately.

WARRANTY

Dansani offers 10 years warranty against manufacturing defects on all Match models.

Exclusive, very strong and durable shower trays are available as optional extras for certain models.

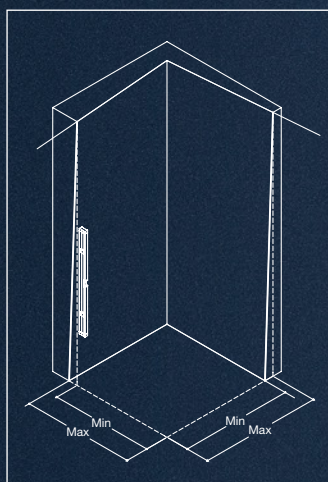
For more detail please refer to dansani.co.uk

UNCOMPLICATED & EXPERTLY DESIGNED

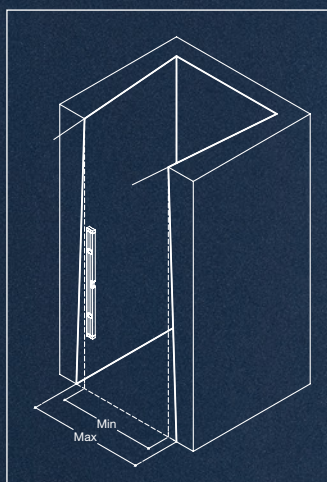
INSTALLATION

It is likely, that the wall in your bathroom is not completely plumb. Maybe it has small recesses. Maybe it is slightly angled. However we don't think that this should cause the installation of your shower enclosure to present problems. Therefore, Dansani Shower is designed with a number of technical features that make it easy for the fitter to install your new Dansani Shower solution, even on very irregular surfaces. With plenty of opportunities for adjustment, you are certain to get a perfect result, irrespective of the solution you choose.

MEASURING

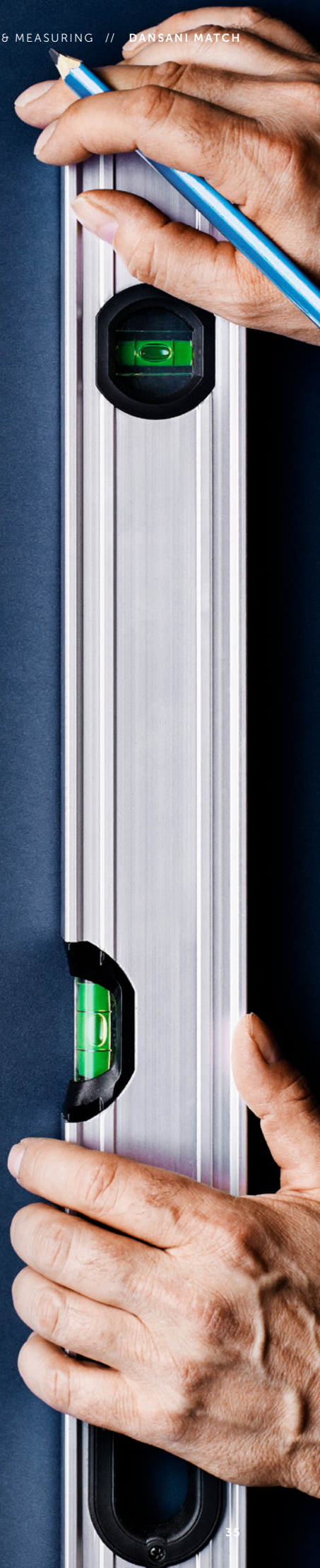


CORNER

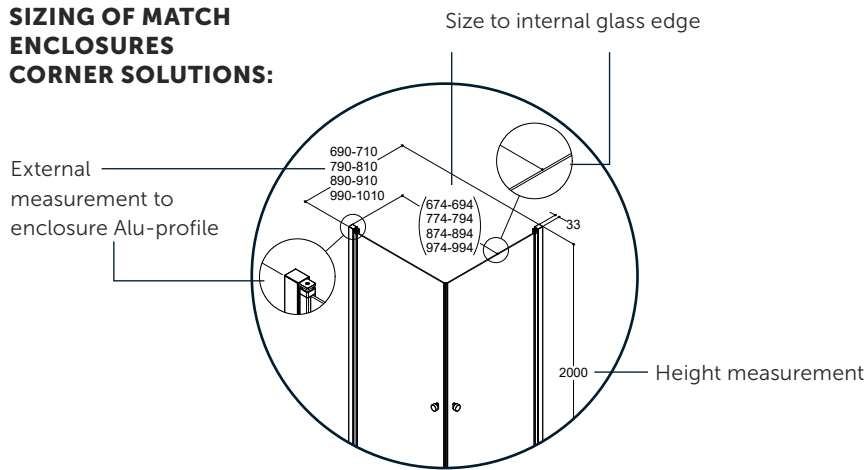


RECESS

Irrespective of whether the wall has an inward or outward angle, the adjustment becomes the difference between the minimum and maximum measurements. Use a plumbline to determine the difference along the height of the screen. Before ordering, always check that these measurements correspond to the min./max. measurements of the selected model. Please see the price list.



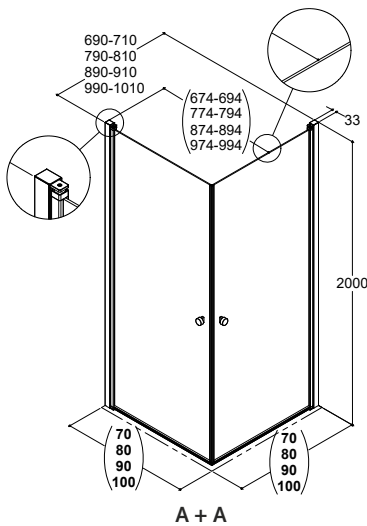
SIZING OF MATCH ENCLOSURES CORNER SOLUTIONS:



CORNER SOLUTIONS

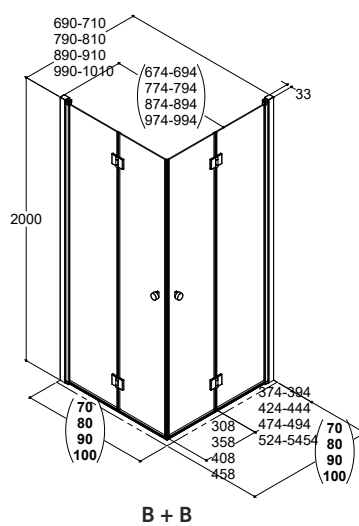
MODEL A

Hinged door



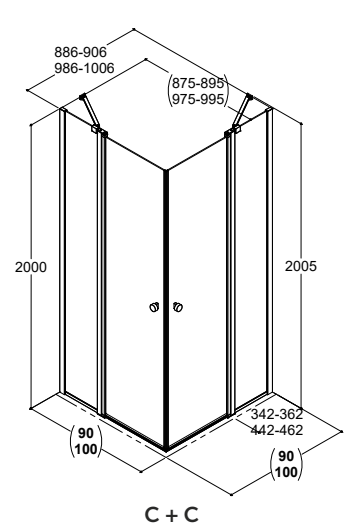
MODEL B

Bifold door



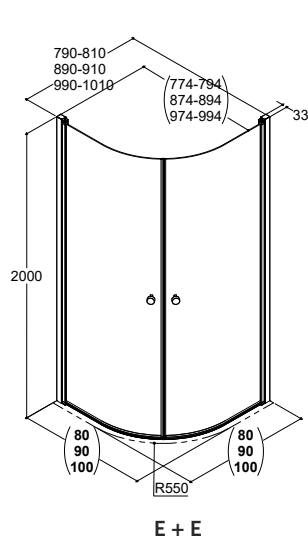
MODEL C

Hinged door



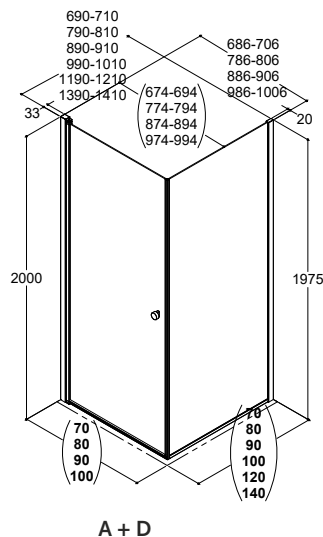
MODEL E

Hinged door



MODEL A AND D

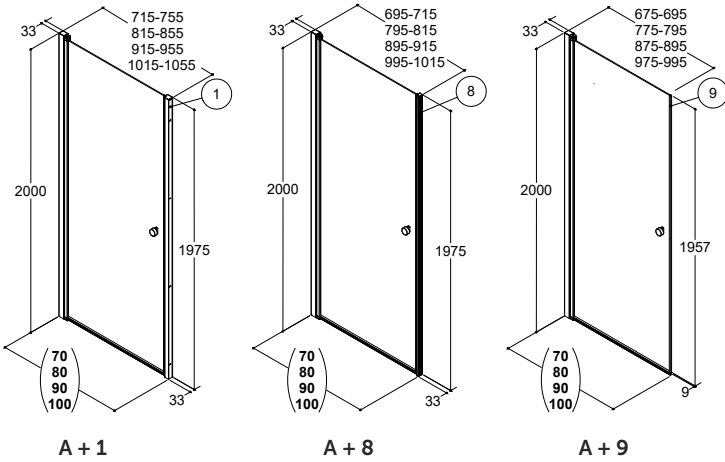
90° hinged door with fixed shower panel



RECESS SOLUTIONS

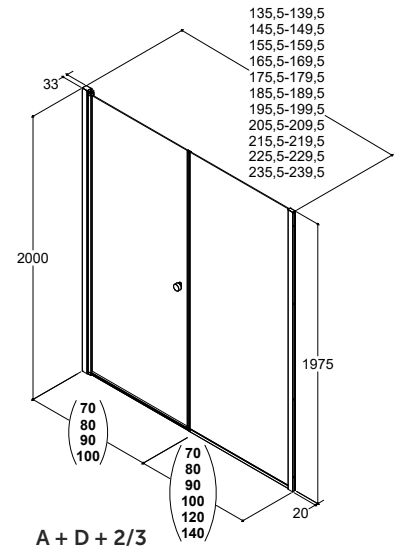
MODEL A

Hinged door



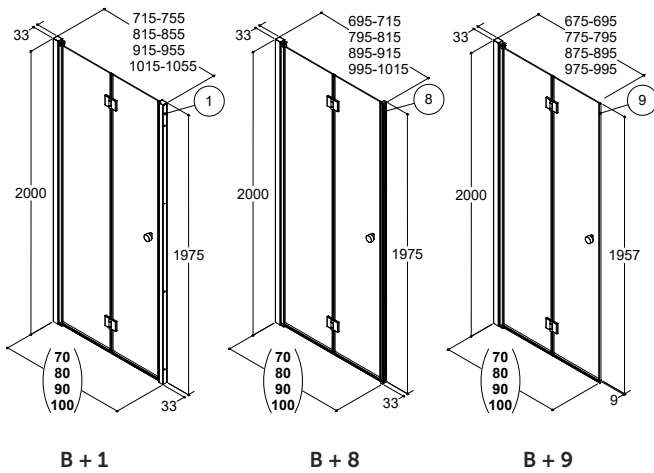
MODEL A AND D

Hinged door with fixed shower panel



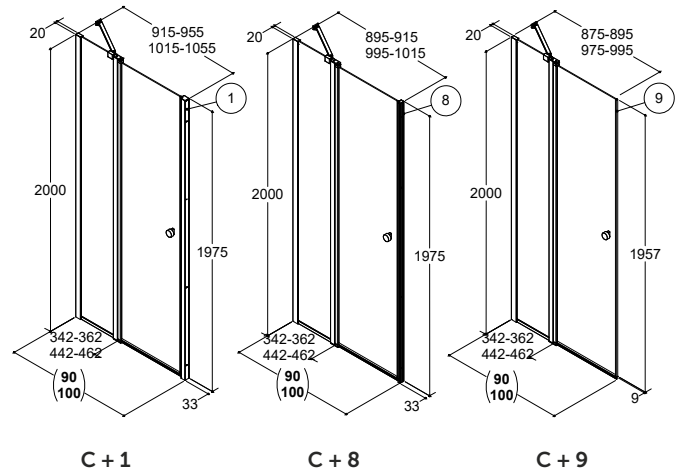
MODEL B

Bifold door



MODEL C

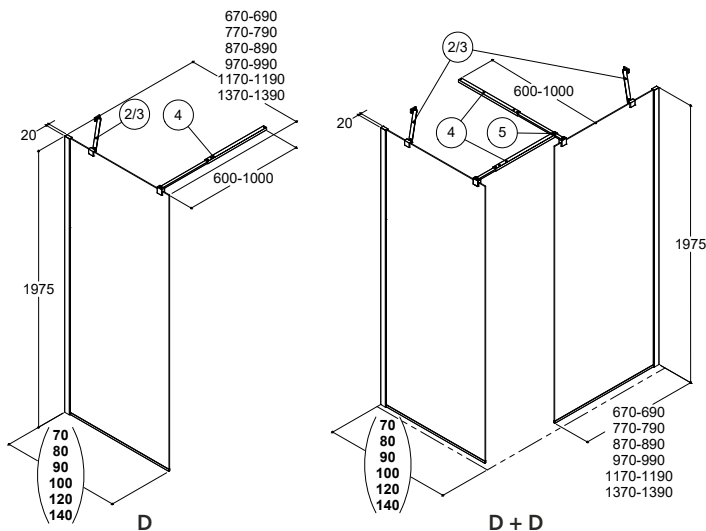
Hinged door with in-line panel



FIXED SHOWER PANELS

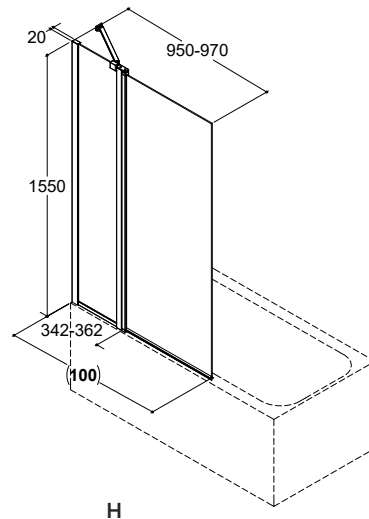
MODEL D

Fixed shower panel



MODEL H

Bath panel with hinged door



»
Height 200 cm.

∨
Choose between the Classic and Deluxe models (Deluxe shown here).

»
Easy cleaning and maintenance with EasyCare treatment on the inside.

∧
All models are reversible without having to adjust them or use tools.

»
Sliding doors in larger widths 120, 140 and 160 cm.

∧
8 mm safety glass.

∧
Shower door handle in stainless steel.

«
Sliding door which can be combined with one or two fixed shower panels – as a corner solution or freestanding shower enclosure.

∧
Easy to install with two people.

∧
The doors can easily be clipped out to make cleaning easier.

10
10 YEAR WARRANTY



DANSANI XXL

38 INSPIRATION

48 PRICE LIST

50 PRODUCT INFORMATION

51 DIMENSIONS

52 SHOWER TRAY



140 cm Classic - Clear glass
Sliding door 1,020.- Art. no. CL1400-0001



CLASSIC DESIGN & ROBUST QUALITY

CLASSIC MODEL

Classic offers robust quality at a competitive price. This model is perfect for you if you'd like a classic design with a discreet and simple look. The solid runners on the sliding door run inside the profile rail so aren't visible from the outside of the door. A classic and simple solution.



Classic runners - exterior view.



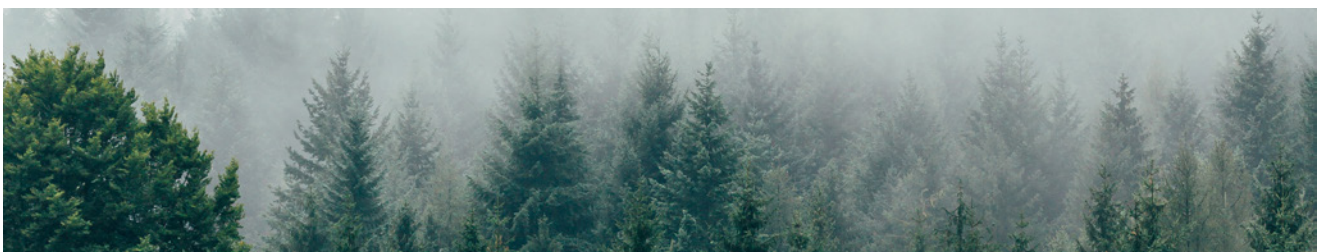
Classic SoftStop function.



Classic runner - interior view.



The door clips out at the bottom for easier cleaning.



120 x 90 cm Classic - Clear glass

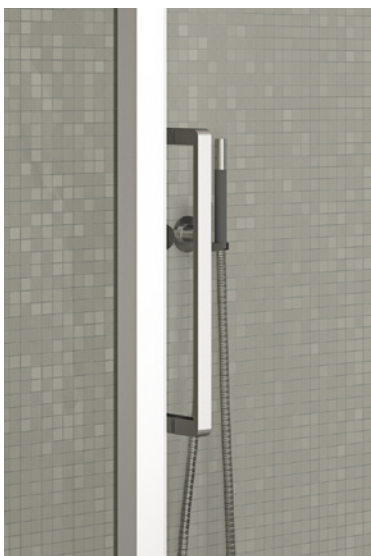
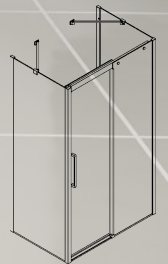
Sliding door/fixed shower panel 1,401.- Art. no. CL1201-0900 /
Shower tray 535.- Art. no. 1610320





160 x 100 cm Classic - Clear glass

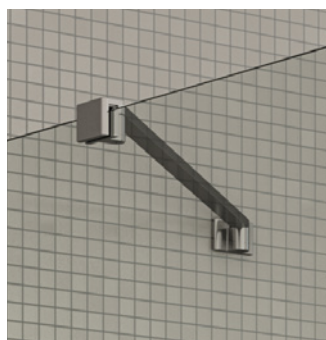
Sliding door/2 fixed shower panels 2,303.- Art. no. CL1602-1000



For the freestanding shower solution with two fixed shower panels, two support rails are supplied.



Shower door handle in stainless steel comes with all models.



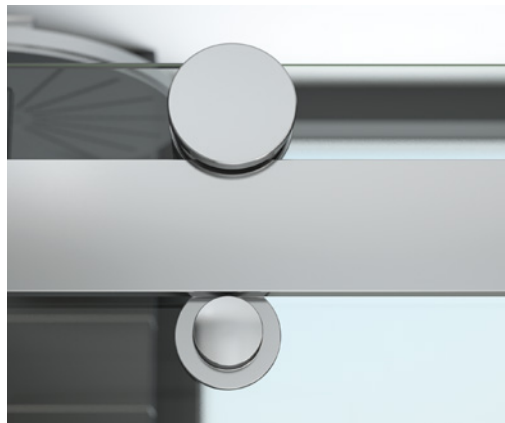
SILENT & ELEGANT DESIGN

DELUXE MODEL

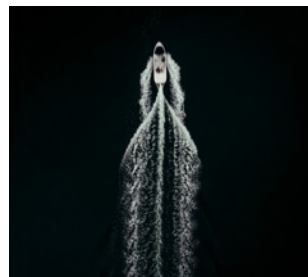
Deluxe offers a particularly stable and silent solution with elegant design. The sliding door features two runners placed on a rail above and beneath the profile to ensure a soft and smooth action. The door is stopped gently by the deluxe SoftStop function. Enjoy the feeling of pure luxury and quality.



«
Deluxe runner - interior view. ▾
Deluxe runners - exterior view.



▾
Standard stainless steel handles are supplied with all models.



«
Deluxe Softstop-function.



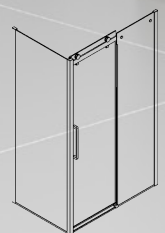
120 cm Deluxe - Clear glass
Sliding door 1,047.- Art. no. DL1200-0001





160 x 90 cm Deluxe - Clear glass

Sliding door/fixed shower panel 1,757.- Art. no. DL1601-0900

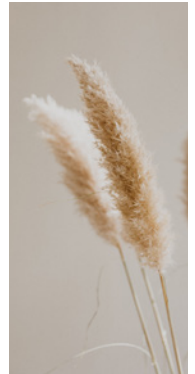




For the freestanding shower solution with two fixed shower panels, two support rails are supplied.



The doors can be easily clipped out at the bottom for easier cleaning.



140 x 80 cm Deluxe - Clear glass

Sliding door/2 fixed shower panels 2,303.- Art. no. DL1402-0800 / Shower tray 535.- Art. no. 1610310

CLASSIC

CLASSIC SLIDING DOOR

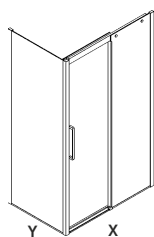
Reversible



Dimensions	120 CM		140 CM		160 CM	
	Art. no.	Price £	Art. no.	Price £	Art. no.	Price £
Min/max adjustment	CL1200-0001	953.-	CL1400-0001	1,020.-	CL1600-0001	1,163.-
	X: 116,5 - 119 cm		X: 136,5 - 139 cm		X: 156,5 - 159 cm	

CLASSIC SLIDING DOOR WITH 1 FIXED SHOWER PANEL

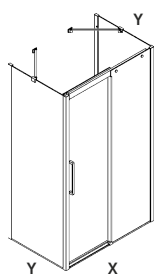
Reversible



Dimensions	120 CM		140 CM		160 CM	
	Art. no.	Price £	Art. no.	Price £	Art. no.	Price £
80 cm	CL1201-0800	1,401.-	CL1401-0800	1,465.-	CL1601-0800	1,611.-
Min/max adjustment	X: 116,5 - 119 cm x Y: 76,5 - 79 cm		X: 136,5 - 139 cm x Y: 76,5 - 79 cm		X: 156,5 - 159 cm x Y: 76,5 - 79 cm	
90 cm	CL1201-0900	1,401.-	CL1401-0900	1,465.-	CL1601-0900	1,611.-
Min/max adjustment	X: 116,5 - 119 cm x Y: 86,5 - 89 cm		X: 136,5 - 139 cm x Y: 86,5 - 89 cm		X: 156,5 - 159 cm x Y: 86,5 - 89 cm	
100 cm	CL1201-1000	1,401.-	CL1401-1000	1,465.-	CL1601-1000	1,611.-
Min/max adjustment	X: 116,5 - 119 cm x Y: 96,5 - 99 cm		X: 136,5 - 139 cm x Y: 96,5 - 99 cm		X: 156,5 - 159 cm x Y: 96,5 - 99 cm	

CLASSIC SLIDING DOOR WITH 2 FIXED SHOWER PANELS

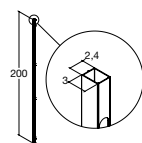
Reversible



Dimensions	120 CM		140 CM		160 CM	
	Art. no.	Price £	Art. no.	Price £	Art. no.	Price £
80 cm	CL1202-0800	2,093.-	CL1402-0800	2,160.-	CL1602-0800	2,303.-
Min/max adjustment	X: 116,5 - 119 cm x Y: 76,5 - 79 cm		X: 136,5 - 139 cm x Y: 76,5 - 79 cm		X: 156,5 - 159 cm x Y: 76,5 - 79 cm	
Incl. 2 pcs. 45 cm support rails						
90 cm	CL1202-0900	2,093.-	CL1402-0900	2,160.-	CL1602-0900	2,303.-
Min/max adjustment	X: 116,5 - 119 cm x Y: 86,5 - 89 cm		X: 136,5 - 139 cm x Y: 86,5 - 89 cm		X: 156,5 - 159 cm x Y: 86,5 - 89 cm	
Incl. 2 pcs. 45 cm support rails						
100 cm	CL1202-1000	2,093.-	CL1402-1000	2,160.-	CL1602-1000	2,303.-
Min/max adjustment	X: 116,5 - 119 cm x Y: 96,5 - 99 cm		X: 136,5 - 139 cm x Y: 96,5 - 99 cm		X: 156,5 - 159 cm x Y: 96,5 - 99 cm	
Incl. 2 pcs. 60 cm support rails						

ADD-ON

SHOWER EXTENSION PROFILE



Increases the installation size by 30 mm

Art. no.	Price £	Art. no.	Price £	Art. no.	Price £
1600700	81.-	1600700	81.-	1600700	81.-

DELUXE

DELUXE SLIDING DOOR

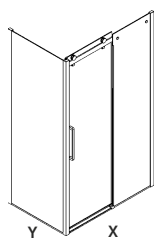
Reversible



Dimensions	120 CM		140 CM		160 CM	
	Art. no.	Price £	Art. no.	Price £	Art. no.	Price £
Min/max adjustment	DL1200-0001	1,047.-	DL1400-0001	1,163.-	DL1600-0001	1,310.-
	X: 116,5 - 119 cm		X: 136,5 - 139 cm		X: 156,5 - 159 cm	

DELUXE SLIDING DOOR WITH 1 FIXED SHOWER PANEL

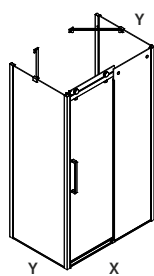
Reversible



Dimensions	120 CM		140 CM		160 CM	
	Art. no.	Price £	Art. no.	Price £	Art. no.	Price £
80 cm	DL1201-0800	1,495.-	DL1401-0800	1,611.-	DL1601-0800	1,757.-
Min/max adjustment	X: 116,5 - 119 cm x Y: 76,5 - 79 cm		X: 136,5 - 139 cm x Y: 76,5 - 79 cm		X: 156,5 - 159 cm x Y: 76,5 - 79 cm	
90 cm	DL1201-0900	1,495.-	DL1401-0900	1,611.-	DL1601-0900	1,757.-
Min/max adjustment	X: 116,5 - 119 cm x Y: 86,5 - 89 cm		X: 136,5 - 139 cm x Y: 86,5 - 89 cm		X: 156,5 - 159 cm x Y: 86,5 - 89 cm	
100 cm	DL1201-1000	1,495.-	DL1401-1000	1,611.-	DL1601-1000	1,757.-
Min/max adjustment	X: 116,5 - 119 cm x Y: 96,5 - 99 cm		X: 136,5 - 139 cm x Y: 96,5 - 99 cm		X: 156,5 - 159 cm x Y: 96,5 - 99 cm	

DELUXE SLIDING DOOR WITH 2 FIXED SHOWER PANELS

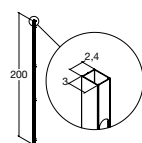
Reversible



Dimensions	120 CM		140 CM		160 CM	
	Art. no.	Price £	Art. no.	Price £	Art. no.	Price £
80 cm	DL1202-0800	2,186.-	DL1402-0800	2,303.-	DL1602-0800	2,450.-
Min/max adjustment	X: 116,5 - 119 cm x Y: 76,5 - 79 cm		X: 136,5 - 139 cm x Y: 76,5 - 79 cm		X: 156,5 - 159 cm x Y: 76,5 - 79 cm	
Incl. 2 pcs. 45 cm support rails						
90 cm	DL1202-0900	2,186.-	DL1402-0900	2,303.-	DL1602-0900	2,450.-
Min/max adjustment	X: 116,5 - 119 cm x Y: 86,5 - 89 cm		X: 136,5 - 139 cm x Y: 86,5 - 89 cm		X: 156,5 - 159 cm x Y: 86,5 - 89 cm	
Incl. 2 pcs. 45 cm support rails						
100 cm	DL1202-1000	2,186.-	DL1402-1000	2,303.-	DL1602-1000	2,450.-
Min/max adjustment	X: 116,5 - 119 cm x Y: 96,5 - 99 cm		X: 136,5 - 139 cm x Y: 96,5 - 99 cm		X: 156,5 - 159 cm x Y: 96,5 - 99 cm	
Incl. 2 pcs. 60 cm support rails						

ADD-ON

SHOWER EXTENSION PROFILE



Increases the installation size by 30 mm

Art. no.	Price £	Art. no.	Price £	Art. no.	Price £
1600700	81.-	1600700	81.-	1600700	81.-

DIMENSIONS & PRODUCT INFORMATION

CLASSIC MODEL AND DELUXE

All Dansani sliding doors and fixed shower panels have been tested and comply with regulations EN 14428:2015 in relation to toughening of glass, stability and water proofing classification.

All models are reversible and can be used in both left and right hand applications without the need for tools or modifications

GLASS

8 mm safety glass according to EN12150 regulations with easy care treatment on the inside. Available in clear glass.

PROFILES

Strong aluminum profile in satin anodized finish. Wall profiles are adjustable.

HANDLES

Shower door handle in stainless steel.

FITTINGS

Wall bracket and brackets for wall support are in chromed zinc-aluminium. Cover caps in chromed ABS.

INSTALLATION

Perfect installation even on off square walls due to the adjustment options.

CLASSIC MODEL - RUNNERS

Brass with polished chrome finish. The runners are not visible from the outside.

DELUXE MODEL - RUNNERS

The runners are produced in zinc alloy. The fittings for the top bar are made in brass with a refined polished chrome finish.

SUPPORT RAIL

Polished stainless steel with cover caps in chromed ABS. For enclosures with 2 fixed shower panels, 2 wall supports are supplied as standard.

SPARE PARTS

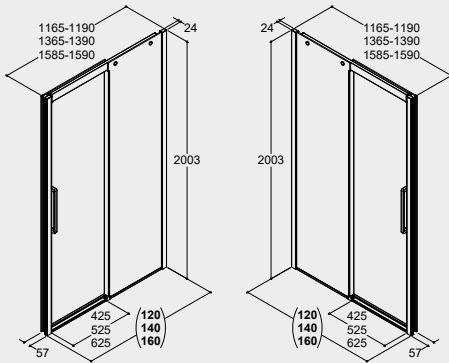
For spare parts please get in touch with your Dansani retailer.

WARRANTY

Dansani offers a 10 year warranty against manufacturing defects on all models.

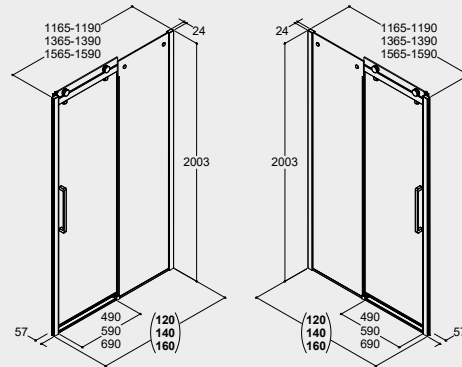
CLASSIC

Sliding door (reversible)



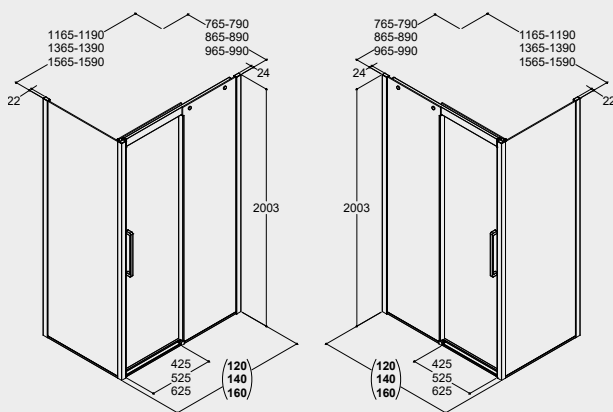
DELUXE

Sliding door (reversible)



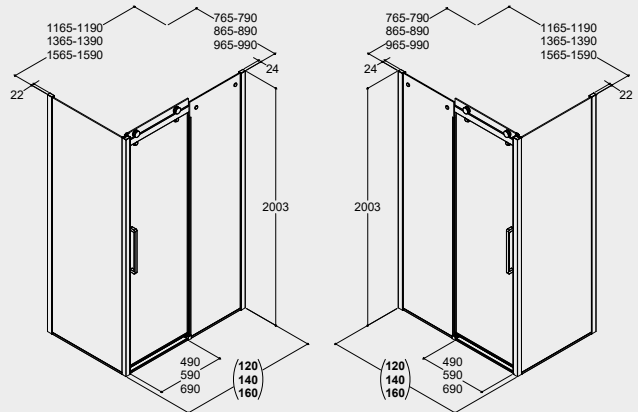
CLASSIC

Sliding door with 1 fixed shower panel (reversible)



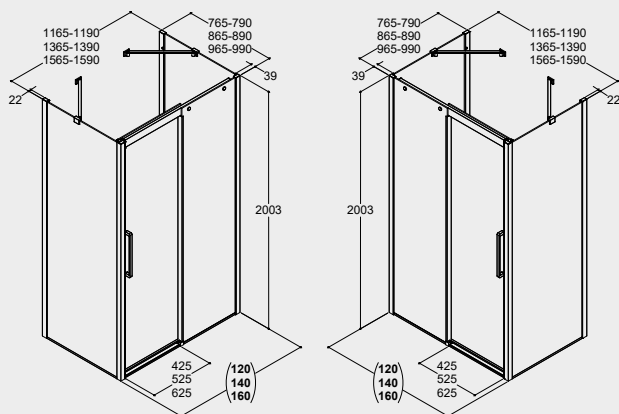
DELUXE

Sliding door with 1 fixed shower panel (reversible)



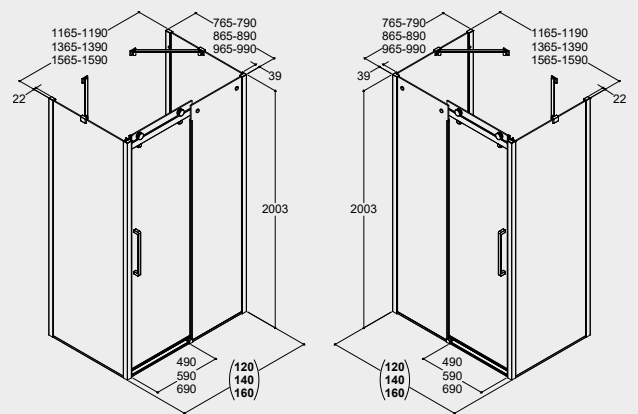
CLASSIC

Sliding door with 2 fixed shower panels (reversible)



DELUXE

Sliding door with 2 fixed shower panels (reversible)



SHOWER TRAYS

SLIM AND SIMPLE SHOWER TRAY WITH A HEIGHT OF ONLY 35 MM

Dansani shower trays are manufactured from a fibre-reinforced composite material, which is subjected to a pressure of 2,000 tons and temperatures of up to 190 degrees during production. This process ensures a very uniform, strong and stable construction, which is very light in comparison with other solutions.

Height adjustable legs come with all shower bases with fronts.

The waste pipe is horizontal, DN50, 90 mm with a waste capacity of 30 l/ min. and a height of 86 mm.



INSTALLATION OPTIONS



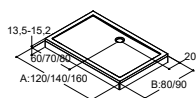
If you want the shower tray to be raised above the floor to allow the waste, for example, to be run back across the floor, Dansani offers a kit to facilitate this type of installation. The kit comprises a number of adjustable feet, which are easily "clicked" on to the base and ensure stable installation, even on uneven floors. In addition, the kit comprises a front panel (plinth) in a fibre-reinforced material, height 100 mm, which is fitted with small clips and makes it easy to remove when cleaning or checking the installation.



If you want the shower tray to be placed on the floor, stricter requirements are made on the waste and, sealing in to the flooring.

SHOWER TRAYS

SQUARE



Dimensions

WITHOUT PLINTH

80 cm

90 cm

WITH PLINTH

80 cm

90 cm

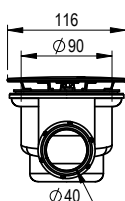
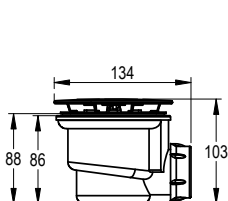
	120 CM		140 CM		160 CM	
	Art. no.	Price £	Art. no.	Price £	Art. no.	Price £
WITHOUT PLINTH						
80 cm	1610300	535.-	1610310	535.-	-	-
90 cm	1610320	535.-	1610330	535.-	1610340	535.-
WITH PLINTH						
80 cm	1611300	764.-	1611310	764.-	-	-
90 cm	1611320	764.-	1611330	764.-	1611340	764.-

Height adjustable without plinth: From 130 mm - 152 mm
 Total height with plinth 135 mm.
 Height of plinth: 100 mm.
 Inside depth: 5 mm - 20 mm

WASTEKIT FOR SHOWER TRAY



Colour	Dimensions	Description	Art. no.	Price £
Chrome	Ø90 mm	For 40 mm waste incl. adapter for 43 cm	1600004	45.-
Chrome	Ø90 mm	For 40 mm waste incl. adapter for 50 cm	1600023	45.-







WE TAKE RESPONSIBILITY

SUSTAINABILITY IN EVERY WAY

Dansani takes responsibility and takes good care of our surroundings. We are energy- and consumption-conscious and have always been so - it is part of our DNA. We have dedicated resources when it comes to sustainability initiatives, and we work very closely with our suppliers and are in control of all components that make up our furniture.

Our basis are the 17 UN sustainable development goals.
That means that we generally:

- Develop our products so that their environmental impact in terms of manufacture, usage and, not least, disposal is minimised.
- Use raw materials, water and energy efficiently to reduce the environmental impact.
- Maintain high safety standards for our employees and promote responsible approaches to the environment.

MORE SPECIFICALLY

So what specifically do we do to enable you to make the most sustainable choices? We generally exclusively focus on solutions that also meet our high quality standards - because long durability is an extremely important element in a sustainable product. We therefore have 10-year warranties on all shower solutions. Obviously, it is also possible to repair or switch individual components which may further extend the life of the shower. It could be a PVC seal or a magnet.

Let's take a look at the materials used in Dansani shower solutions. For the Match shower, we use a quality 6 mm safety glass that has been treated with the tough and environmentally friendly EasyCare. For large XXL shower solutions, we use a safety glass of 8 mm thickness. Thick glass will last for many years, and our glass has also been tested and meets the EN 14428:2015 & EN12150 requirements that relate to stability and toughening.

And then there are the profiles in both shower series. They are a strong aluminium alloy, and aluminium besides being a high quality material is also very sustainable. It has an incredibly long life and functional and design benefits, plus its recycling properties are nearly endless.



Dansani is committed to supporting the UN's global goals.
For more detail please visit dansani.co.uk

IF SOMETHING IS WORTH DOING, IT'S WORTH DOING WELL

At Dansani this is our motto. Since our foundation in 1983 it has always been that way and that's how it will continue in the future. We are bathroom enthusiasts through and through and we want to make the bathroom the best room in the house. Therefore our mission is simple - to develop and produce beautiful and well thought out bathroom concepts that create joy in everyday life.

DANISH DESIGN

Danish design is about putting people at the core of the process – Danish design makes everyday life easier, and it's beautiful and simple to look at. For Dansani, it is the embodiment of our designs. It must be good on the eye, it must work effortlessly and it should feel like coming home.

40 YEARS OF QUALITY CRAFTSMANSHIP

Our craftsmanship is managed in our production facilities in Denmark. We have skilled people with respect for the materials they use and with many years of experience. They engage fully with the products and continuously optimise the processes involved while delivering high quality work every single day is part of their DNA. They do it exactly so that we are absolutely sure of the quality of what we put our logo on.

ENVIRONMENT & SUSTAINABILITY

We have always categorised all waste and been energy conscious at Dansani, and when it comes to our furniture, we make demands on ourselves and on our suppliers. Wood components must be traceable and we keep a keen eye on the proportion of recycled material and not least the energy used in the production of our products. We are honest about the materials we work with and we want to pass on as much information as possible to you as a customer. Read more on our website.



Dansani Ltd
7 Mermaid Walk
The Waterfront
Brighton Marina
East Sussex
BN2 5WA GB
T. 0208 15 76 069
mail@dansani.co.uk
dansani.co.uk



Dansani is committed to supporting the UN's global goals. For more detail please visit dansani.co.uk

